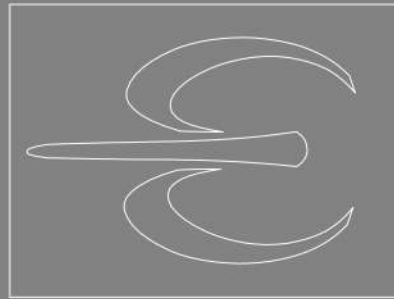


MORTARS

◆ EStonetex® System ◆

Reproductions of stones, rocks, bricks, woods, etc ...



ESTECCHA®

Theme decorations of waterfalls, facades, wineries, commercial premises hotels



ESTonetex®-Expanded

MORTAR FOR THEMING OF STONES, ROCKS,
BRICKS, WOOD



DESCRIPTION

The ESTonetex®-Expanded mortar, belonging to the ESTonetex® System, (also called Tixo or TXT) is a moldable and moldable thixotropic mortar that expands due to its composition and is especially suitable for decorative theming, creation and restoration of horizontal and vertical walls indoors, outdoors, on brick, cement and concrete substrates, mesh structures metallic or other types of materials, porex with mesh, natural stones and artificial. Not suitable for waterfalls or under water (for these we have the alternative with ESTonetex®-Extreme).

USES

Especially recommended for use in theming of stones, rocks bricks, wood, logs, cornices, restorations, allowing perfect reproductions of almost any type of construction material, smooth, rustic, natural and artificial stones, concrete, metal, in decorations interiors and exteriors, homes, theme parks, housing estates, hotels, discos, zoos, etc ...

It is also used for conventional and decorative finishes of the most diverse nature, reducing the weight up to 10% compared to plaster mortars usually. High thixotropic performance, applications from 0.8 cm up to 15-20 cm volume in a single coat.

ADVANTAGES

- Great plasticity and high mechanical resistance.
- Thixotropic. Very good workability.
- Manual or machine application. Projectable.
- Excellent adherence.
- Indoor and outdoor, water and weather resistant.
- Breathable.
- Excellence reprofiling properties.

Only with water:

For every 23 kg will be used approx. 5.7-6 l of water. Adjust the mixing ratio in each case, depending on the temperature, environment and air humidity.

PACKAGING

ESTonetex®-Expanded is packed in multi-foil paper bags with 23 kg (+/- 2%) anti-humidity sheet. 1104 kg pallet (48 bags).

TECNICAL DATA

Product identification and application data	
Appearance	Powder
Color	Sandstone, white, gray
Yield	16,5 kg/m ² per 1 cm of thickness
Composition	White cement, limestone sands. calcium dihydroxide, additives.
Workability time:	
Start of setting	3-6 H according temperature and humidity
End of setting	4-7 H
Application temperature	Between 5°C and 30°C
Minimum thickness per layer	5 mm
Maximum thickness per layer	200 mm
Pigmented or tinted	EST-26 Multilite, EST-MultiPol EST-Mixol (check color chart)
Compatibility	do not mix with other products
Special additives	EST-26 Multilite
Category	F1-CSIV W2 with CE marking

Recommended to waterproof with EST-3 Plus N



TÜVRheinland®
Precisely Right.



ETAG 004



ESTonetex® System

Reproductions of stones, rocks, bricks, woods, etc ...

Introduction

ESTonetex® brings together the texture and performance of a special material that constitutes a noble cladding, respecting to the smallest detail the nature of the stone, enhancing the value of modern and ancient architecture.

wide variety of textures and colors

multitude of combinations

specialized consultations

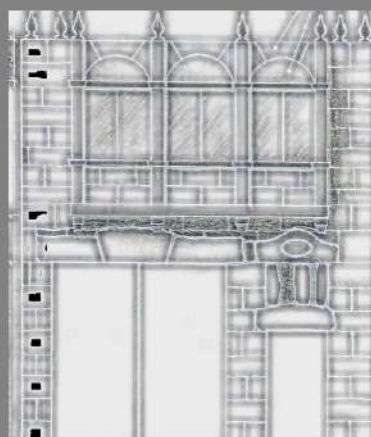
original proposals

realization of preliminary projects

draft



the work done



WORKS CARRIED OUT WITH THE ESTonetex® System

- FACADES (arches, pipelines, friezes, vaults, etc ...)
- WAREHOUSES
- COMMERCIALLOCALS
- HOTELS, RESTAURANTS ANDBARS
- HERITAGERESTORATION
- ROCS AND THEMATIZATIONS WITH ROCKS
- CIVIL AND PUBLIC WORKS(walls, housing developments, roundabouts, etc ...)



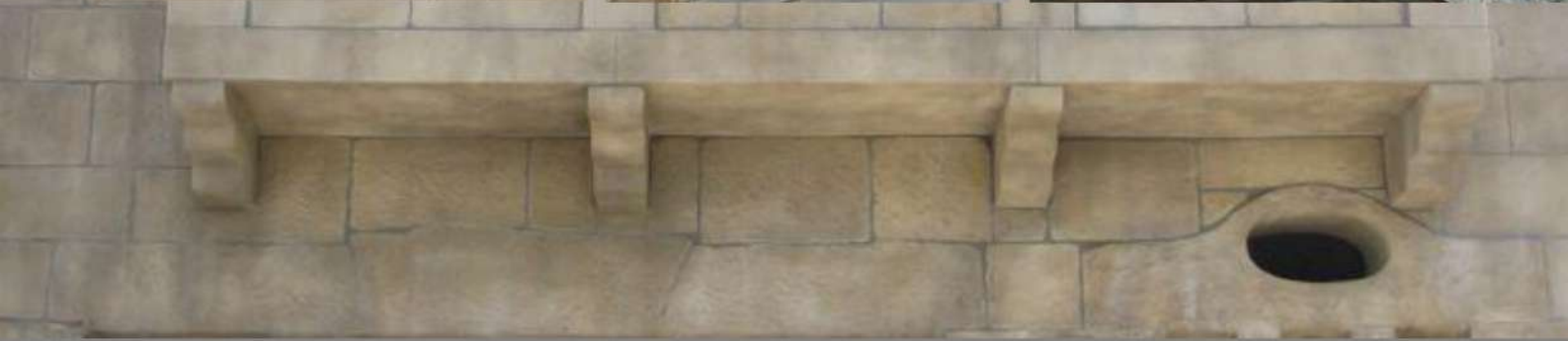


With the ESTonetex®-Expanded hand applied or machine projected mortar, any type of stone is made to decorate facades with rustic or modern styles, both new and old, regardless of the type of support (ceramic and concrete blocks, old stone and worn, brick, etc ...).

new and old clad facades
with mortar stone in different
types, formats, textures and colors.



door remarks windows and balconies
cornices, moldings and lintels manufactured in our workshops





ESTonetex® System

FACADES

New buildings and constructions with a different image,
coated with ESTonetex®-Expanded mortar.



rim, lintels and moldings embellish the facades
reproductions of aged and irregular ashlar stone





Redecorating spaces to make environments more attractive,
from the entrance to the interior, with the ESTonetex®-Expanded mortar.



coatings with original textures

tuning finishes and decorations

bars with medieval or contemporary styles

decorative projects of locals





ESTonetex® System

WINERIES

We customize spaces
for cellars in basements, subs oils or garages.



rustic, medieval and modern homes

brackets, capitals and moldings





We have original and exclusive proposals to set these special places, all with ESTonetex®-Expanded mortar.



decorative accessories

custom themes

profiled arches

